

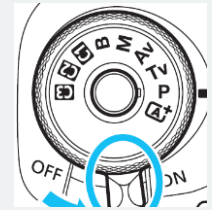
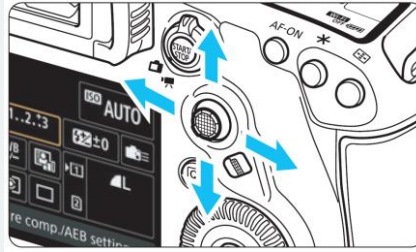
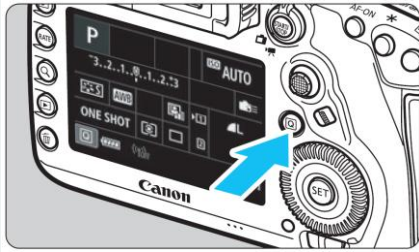
Canon DSLR Menu Tutorial



Best menus in the market. Similar across models. Varies for camera specific features.

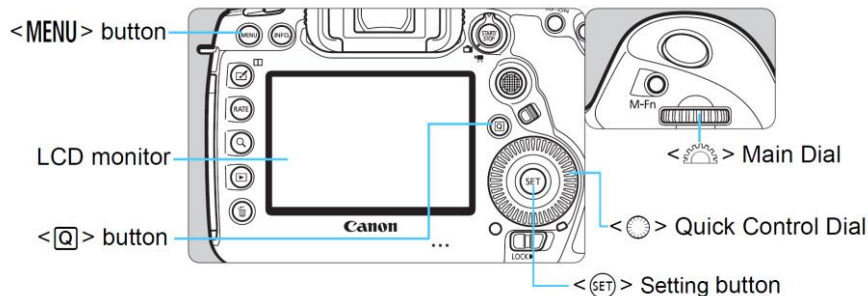
- Chane Cullens
- Chane@CCullens.com
- CCullens.com

- 1 Quick Menu** - Use Quick Control button to set shooting functions with the LCD
- Press the [Q] button Use touch screen or joystick and dial to change Varies with mode



Tip - Leverage dedicated buttons to avoid using menus - ISO, Drive, WB, AF, Metering ...

- 2 Setting Menu** - Navigating the menus and altering the settings



1. Press the [Menu] button
2. Select a tab with the [Q] button left & right, or Main dial
3. Select an item with [Q] button up & down, or Quick Control dial
4. Press [Set] button to set it
5. Exit setting by pressing [Menu]

Tip - Certain menu tabs and menu items are not displayed in [A] Auto, Sports, Portrait ... modes

- 3 Shooting Menu**

1. Clear all camera settings - factory config
2. Photo quality - increase dynamic range using large RAW
3. Color Space - increase color range using Adobe RGB
4. HDR mode - for in-camera high dynamic range photos, use a steady camera
5. Beep - disable the beeper
6. Speedlite control - powerful
 - a) Flash sync. speed in AV mode
 - b) Controlling external flashes
7. Extend battery life using a shorter photo review time

Tip - Use Quick Menu as a faster menu alternative - exposure, ISO, drive mode, AEB ...

- 4 Saving Menu Settings**

- Menu changes are saved automatically, options vary based on mode Auto, P, TV, Av ...
- Used to define the camera's configuration when it is powered on

Tip - Leverage Custom Shooting Modes C1, C2 & C3 to save multiple custom camera configurations

5 Auto Focus

1. Number of autofocus points 1, some, all
2. Canon autofocus is highly configurable, varies by lens, details in your manual
3. One-Shot - stationary subject
4. AI Servo - moving subject
5. AI Focus - auto switch to AI Servo when subject starts moving
6. AI Servo - has many optimized sub-modes by sport - tennis, bicycle, soccer, figure skaters, gymnastics ...
7. Eye tracking. Amazing on R5!

Tip - Use AF point selection button [+] (back, top on far right) to quickly choose focus point

6 Playback

1. Protect, Erase, Copy photos
2. RAW process - create JPGs from RAW photos in-camera, handy for sharing
3. Use Rotate, Crop, Rating to edit in-camera
4. Slide show - power and flexibility, for example, show only 5 star photos from last Tuesday
5. Control over HDMI allows leveraging the TV remote to control your slide show
6. Options to show highlight alerts, autofocus points and histogram in brightness or RGB
7. While showing photos toggle the [Info] button to display more and more information

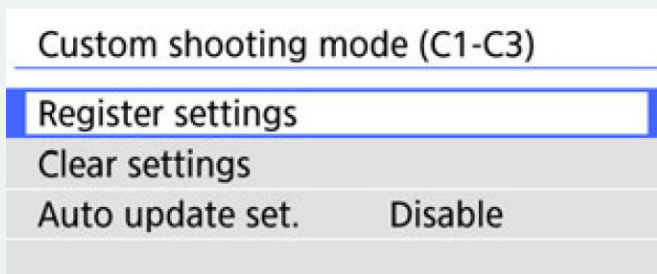
Tip - Turn on AF Point Disp to show exactly what was in focus when photo taken

7 Setup

1. Format card - a quick way to erase all photos use low-level format as a simple integrity check over most of the card
2. Extend battery life using a shorter auto power off time
3. Date & time - use EOS software to set based on PC time, when traveling update to destination time zone before leaving
4. GPS - can automatically set date & time
5. Viewfinder - level, battery, mode, drive ... add the info that helps you avoid errors
6. Copyright - automatically add metadata
7. Firmware - firmware updates to keep the camera in top shape
8. Battery info - recharge performance info will let you know when to replace it

Tip - After configuring your menus, take photos of menus to remember your settings

8 Custom Shooting Modes



Save 3 versions of your favorite settings, for example

- Favorite portrait settings
- Favorite moving subject settings
- Favorite low-light settings

Enable Auto update to let the camera remember your latest tweaks

Tip - Define your settings before you arrive at a photo event, then fine tune

9 More Information

- Use your camera manual. This handout only covers 20% of what is possible.
- Search the internet to find articles and videos on your camera.
- Challenge - every month use a new button, quick setting or menu item.